

Model 570 Automatic Mastic Airless Spray Gun

FOR PROFESSIONAL USE ONLY

WARNING — HIGH PRESSURE — WARNING

MAXIMUM WORKING PRESSURE UP TO 4000 POUNDS PER SQUARE INCH

- DO NOT POINT SPRAY GUN AT ANY PART OF THE HUMAN BODY
- FLUID UNDER HIGH PRESSURE CAN PENETRATE THE SKIN AND CAUSE SEVERE INTERNAL INJURY
- IN CASE OF INJURY OBTAIN MEDICAL ATTENTION IMMEDIATELY
- BE SURE TO REPORT NATURE OF INJURY AND TYPE OF FLUID OR SOLVENT TO THE DOCTOR

Be sure you understand ALL of the following instructions thoroughly BEFORE operating any part of the airless equipment system. CONSULT YOUR BINKS REPRESENTATIVE TO CLEAR UP ANY ITEMS OF INSTRUCTION YOU DO NOT UNDERSTAND.

1. UNDER NO circumstances should the spray gun be carelessly handled nor its spray (even when the nozzle is removed) directed at close proximity to any part of the human body.
2. DO NOT operate Airless Spray Gun with tip guard housing removed or altered.
3. NEVER clean, change, or remove the nozzle from the spray gun without first doing the following:
 - a. Shut off pump and, in addition, unplug electrical cord or turn off air supply.
 - b. Release fluid pressure in the entire system, from pump or supply line to spray gun.
4. NEVER attempt to force the flow of liquid backward through the gun (blowback) with your finger, hand, or hand-held object pressed against the gun nozzle.
5. NEVER plug a hose leak with your finger, with adhesive tape, or other “stop-gap” device.
6. NEVER operate the airless system with a defective hose. ALWAYS replace the defective hose immediately. For continuing safety, users are urged to:
 - a. ALWAYS handle carefully all hose connections, joints, and seating surfaces on the spray gun to prevent damage.
 - b. NEVER kink or bend the fluid hose into less than a four inch radius.
 - c. FREQUENTLY check the hose for kinks or abrasions. These may develop into a rupture.
 - d. NEVER use standard hardware to modify the airless system. ALWAYS use Binks high pressure fittings only.
7. The airless pump must be grounded before operating the airless spray system.

INSTALLATION AND OPERATING INSTRUCTIONS

Your new Binks 570 Automatic Airless Spray Gun has been thoroughly tested before leaving the factory. No adjustments are required before spray operations begin other than installing the nozzle tip selected. The gun body has four holes which allow the material body to be mounted in any of four positions for convenient fluid hose hookup.

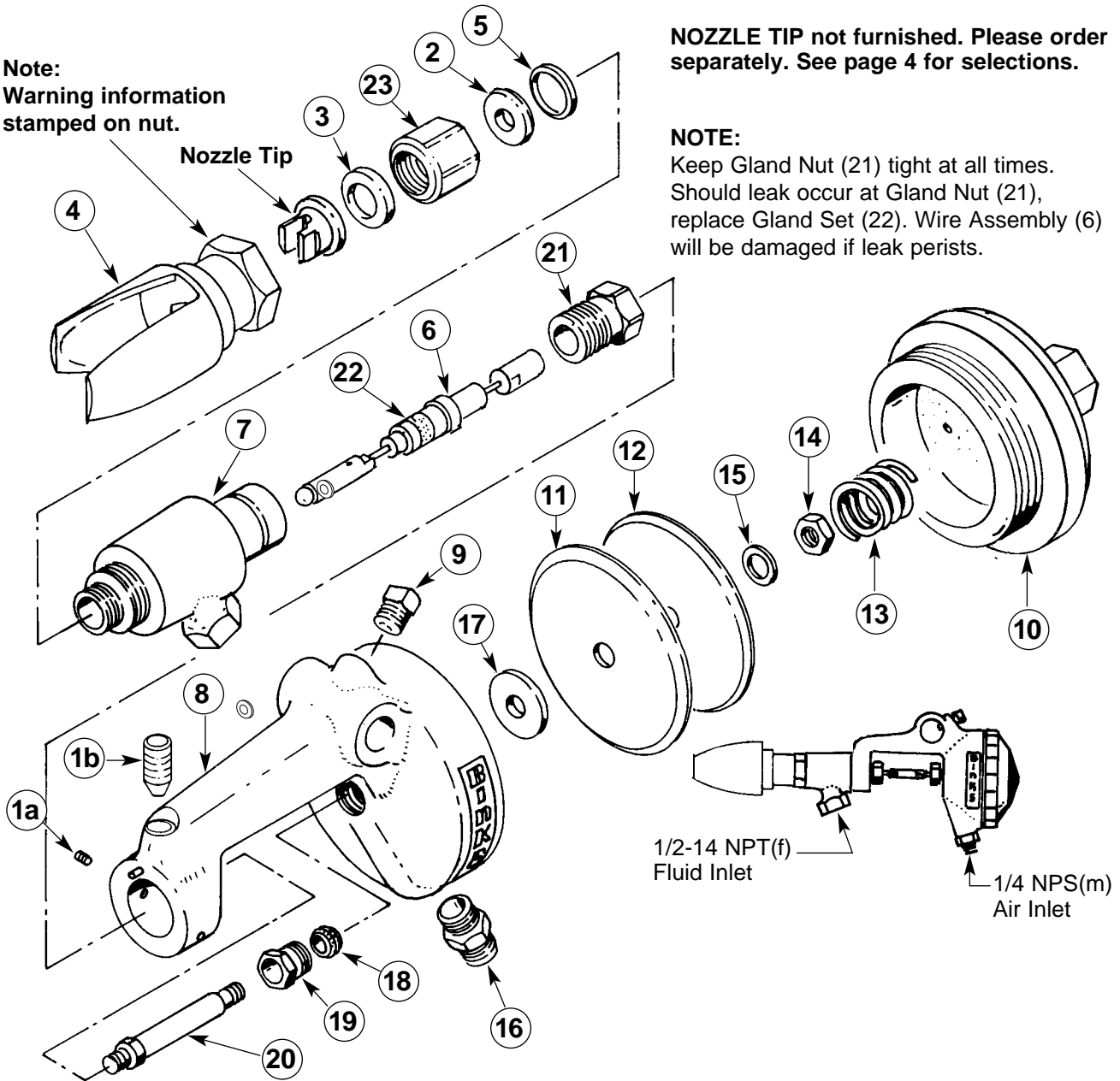
The following steps are recommended for obtaining best results from your spray gun:

1. Install spray gun on gun mount and tighten the Set Screw (9) securely. Note: The mounting hole is 1/2" diameter.
2. Connect air hose to Fitting (16). The gun is actuated by air pressure from a 3-way valve. The valve provides air to trigger, shut-off, and exhausts air from the gun. The gun should be limited to 200 cycles per minute (maximum). Approximately 40 to 60 psi air pressure is required to operate the spray gun; however, use the minimum air pressure required.
3. Connect high pressure airless fluid hose to the gun Material Body Assembly (7) and tighten.
4. Remove Tip Guard Assembly (4), Nozzle Tip, and Gasket (3) from Spray Gun (or remove Twist-Tip if used). Turn on air supply to operate air valve to spray gun. Turn on material supply very slowly and allow spray gun to trigger a few times to purge any entrapped air in fluid system.
5. Shut fluid supply and air supply OFF.
6. Replace gasket (3), Nozzle Tip, and Tip Guard Assembly (4) (or Twist-Tip) as per safety procedure described in paragraph 3 above.
7. Turn air and fluid supply ON and check the spray pattern for proper atomization.

NOTE: When the pattern is right, the pressure is right. Excessive fluid pressure will only distort the spray pattern.
8. The spray gun nozzle should be located at such a distance to the product where maximum fan pattern width is evident. This is usually 8" to 14". The spray pattern may be positioned either vertically or horizontally by rotating nozzle tip (or the Twist-Tip).

continued on pg. 3

Note:
Warning information
stamped on nut.



PARTS LIST

(When ordering, please specify PART NO.)

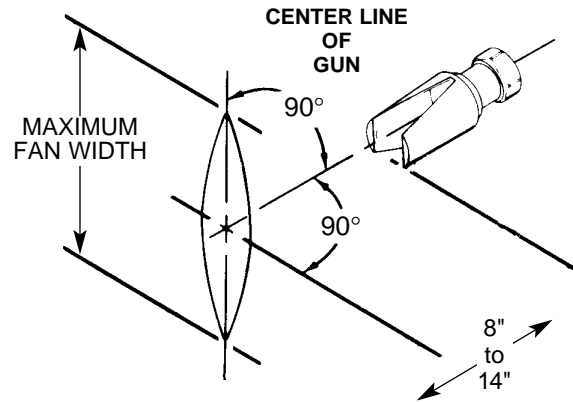
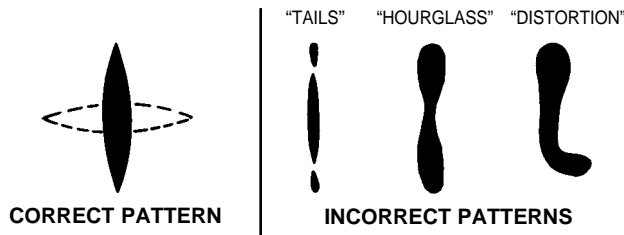
ITEM NO.	PART NO.	DESCRIPTION	QTY.	ITEM NO.	PART NO.	DESCRIPTION	QTY.
1a	20-6705	SET SCREW, 1/4-20 x 3/16" long...	2	11	54-3051†	DIAPHRAGM.....	1
1b	20-6130	SET SCREW, 1/4-20 x 1/2" long, with Nylock	1	12	54-3045	BACK PLATE	1
2	54-2929†	SEAT.....	1	13	54-3052†	SPRING.....	1
3	54-2229†	GASKET	1	14	20-5351	NUT, 8/32	1
4	54-3085	TIP GUARD ASSEMBLY	1	15	20-5352	LOCKWASHER	1
5	54-2927†	SEAL.....	1	16	71-28	FITTING, 1/8 NPT x 1/4 NPS	1
6	54-2955†	WIRE ASSEMBLY.....	1	17	54-3055	WASHER.....	1
7	54-3048	MATERIAL BODY ASSEMBLY ..	1	18	54-3053†	PACKING	1
8	54-3039	GUN BODY ASSEMBLY	1	19	54-3059	BEARING SCREW ASSEMBLY..	1
9	20-1359	SET SCREW 5/16-18 x 5/8" long ...	1	20	54-3061	STEM	1
10	54-3060	CAP ASSEMBLY.....	1	21	54-2964	GLAND NUT	1
				22	54-2949*	GLAND SET	1
				23	54-2928	SET CAP.....	1

† Also available in 54-3122 Repair Kit. Please order separately.

* Furnished with Item 6.

Binks MODEL 570 AUTOMATIC MASTIC AIRLESS SPRAY GUN

9. "Hour Glass" or "Tails" on the spray pattern normally indicates too low a fluid pressure for the nozzle tip being used; or, the material is too viscous.
10. A distorted spray pattern usually means a plugged or worn nozzle tip.
11. Using excessive fluid pressure will only cause undue wear of the nozzle tip.



MAINTENANCE INSTRUCTIONS (See High Pressure Warning Statement on Page 1)

To Clean Nozzle Tip:

1. BEFORE proceeding with any maintenance, read safety procedure, paragraph 3, in High Pressure Warning, page 1.
2. Remove Tip Guard Assembly (4), Nozzle Tip, and Gasket (3).
3. Submerge Nozzle Tip in solvent to remove dried material.
4. Blow air through Nozzle Tip to clean.
5. Airless Spray Nozzle Tips are made of tungsten carbide and are very brittle. Do not drop. To clean a nozzle tip use solvent, toothpick or sharpened match. Never use a metal probe.

To Replace Wire Assembly:

1. BEFORE proceeding with any maintenance, read safety procedure, paragraph 3, in High Pressure Warning, page 1.
2. For convenience, you may wish to remove spray gun from gun mount.

3. Carefully remove the Cap (10). The Spring (13) is under tension and will come out when Cap (10) is removed.
4. Remove Nut (14) and Lockwasher (15). The Back Plate (12), Diaphragm (11) and Washer (17) may be removed at this time.
5. Loosen the Wire Assembly Nut (6) from the Stem (20).
6. Loosen and remove the Bearing Screw Assembly (19) and the Stem (20) from spray gun. The Packing (18) should also be inspected at this time. If worn, replace.
7. Loosen and remove the Gland Nut (21). The wire Assembly (6) may now be pulled rearward from the spray gun.
8. If worn, replace the Gland Set (22).
9. The Material Body Assembly (7) may be removed for cleaning by loosening Set Screws (1). Note the Pin in Gun Body Assembly (8).
10. Reassemble in reverse order.

DIFFUSER ASSEMBLIES*

Reduces fluid velocity to minimize tip wear and to aid fluid filtration. Order 54-2229 Nylon Gasket with either set-up, described below.

54-2208 Nut for use with 54-1639 thimble and 54-1640 (50 mesh) or 54-1797 (100 mesh) screen.
54-2378 Nut for use with 54-1835 (.005) or 54-1836 (.009) edge type filter.



*Not furnished.
Please order separately.

TWIST-TIP II REVERSIBLE NOZZLE CLEANER*

The Twist-Tip Nozzle Cleaner allows the purging of a clogged nozzle orifice without disassembly from the spray gun. The tungsten carbide nozzle is permanently assembled into the rotatable cylinder tip insert (stainless steel) and handle assembly. No alignment or adjustments are required. No gun nozzle seal gasket is used as the Twist-Tip II incorporates its own cylinder seal.

*See page 4 for Twist-Tip selections.



TUNGSTEN CARBIDE AIRLESS TIP and TWIST-TIP II SELECTIONS

Binks Standard Airless Nozzle Tip Part Numbers

(Final two digits indicate angle of spray) See your Binks representative for additional available selections not listed here.

ORIFICE SIZE (inches) GPM*	APPROXIMATE SPRAY (FAN) WIDTH (inches)									
	Spray Fan Pattern measured with nozzle 12" from surface.									
	2-4	4-6	6-8	8-10	10-12	12-14	14-16	16-18	18-20	20-22
.011 .12	9-1120	9-1130	9-1140	9-1150 9-1170	9-1180	-	-	-	-	-
.013 .18	-	9-1320	9-1330 9-1340	9-1350	9-1360	9-1380	-	-	-	-
.015 .23	9-1500	9-1510 9-1520	9-1530	9-1540 9-1550	9-1560	9-1580	9-1590	-	-	-
.016 .28	-	-	-	-	-	9-1670	-	-	-	-
.018 .36	-	9-1800 9-1810	9-1820 9-1830	-	9-1840 9-1850	9-1860	9-1880	9-1890	-	-
.021 .47	-	9-2100 9-2110	9-2120	9-2130	9-2140	9-2150	9-2160	9-2180	9-2190	-
.026 .72	-	9-2610	9-2620	9-2630	-	9-2640	9-2650	9-2660	9-2680	9-2690
.031 1.1	-	-	9-3120	9-3130	-	9-3140	9-3150	9-3170	9-3180	9-3190
.036 1.4	-	-	9-3620	9-3630	-	9-3640	9-3650	9-3660	9-3680	9-3690
.043 2.1	-	-	-	-	-	9-4340	9-4350	9-4360	9-4380	-
.052 2.8	-	9-5220	-	-	-	9-5220	9-5250	9-5260	9-5280	-
.062 4.2	-	-	-	-	-	-	-	9-6260	9-6280	-
.072 5.7	-	-	-	-	-	-	-	9-7260	9-7280	-
.078 7.1	-	-	-	-	-	-	-	9-7860	9-7880	-

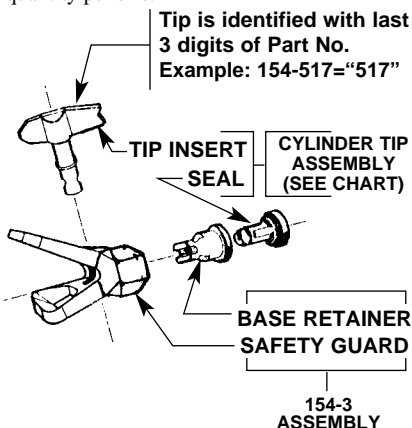
*Flow rate established with water at 2000 psi.

Twist-Tip II Nozzles

Not available as a complete assembly. All tip assemblies include tip insert and seal under the listed part no.

Tip assemblies plug into 154-3 retainer and safety guard assembly with complete interchangeability.

Binks stocks only the cylinder tip assemblies marked with a dot (*). All sizes are available on special order, but are subject to minimum quantity per size.



Tip is identified with last 3 digits of Part No.
Example: 154-517="517"

ORIFICE SIZE (inches) GPM*	Binks Replacement Cylinder Tip Assembly Part Numbers For Binks Twist-Tip II Nozzle Cleaner.											
	APPROXIMATE SPRAY (FAN) WIDTH (inches) Spray Fan Pattern measured with nozzle 12" from surface.											
	2-4	4-6	6-8	8-10	10-12	12-14	14-16	16-18	18-20	20-22	22-24	
.007 .057	154-107	154-207	154-307	154-407	154-507	154-607	-	-	-	-	-	
.009 .078	154-109	154-209	154-309	154-409	154-509	154-609	154-709	-	-	-	-	
.011 .12	154-111	154-211	*154-311	*154-411	*154-511	154-611	154-711	154-811	-	-	-	
.013 .18	154-113	*154-213	154-313	*154-413	*154-513	*154-613	154-713	154-813	154-913	-	-	
.015 .23	154-115	*154-215	*154-315	*154-415	*154-515	*154-615	*154-715	154-815	154-915	154-1015	-	
.017 .31	154-117	154-217	154-317	154-417	*154-517	*154-617	*154-717	154-817	154-917	154-1017	-	
.018 .36	*154-118	*154-218	154-318	*154-418	*154-518	*154-618	*154-718	*154-818	154-918	154-1018	-	
.019 .39	*154-119	*154-219	154-319	*154-419	*154-519	*154-619	*154-719	*154-819	*154-919	*154-1019	-	
.021 .47	154-121	154-221	154-321	*154-421	*154-521	*154-621	*154-721	*154-821	154-921	154-1021	-	
.023 .57	-	-	154-323	154-423	*154-523	154-623	*154-723	154-823	154-923	-	-	
.026 .72	-	*154-226	*154-326	*154-426	*154-526	*154-626	154-726	154-826	154-926	-	-	
.031 1.1	-	-	*154-331	*154-431	*154-531	154-631	*154-731	154-831	*154-931	154-1031	154-1131	
.036 1.4	-	-	*154-336	*154-436	*154-536	154-636	*154-736	154-836	154-936	154-1036	154-1136	

Twist-Tip II Replacement Cylinder Tip Assemblies are identified by the last 3 (or 4) digits of the part no.

Example: 154-517 is marked "517"

* Flow rate established with water at 2000 psi.

• Binks stocks only the cylinder tip assemblies marked with a dot.

Orifice in thousandths of an inch.

This, times 2, equals pattern size in inches.

2122R-6 Revisions: Updated graphic standard; (P2) Parts List Item No.1A changed to 20-6705, Item No.16 changed to 71-28.