

Model 550 Automatic Airless Spray Gun

FOR PROFESSIONAL USE ONLY

WARNING — HIGH PRESSURE — WARNING

MAXIMUM WORKING PRESSURE UP TO 3000 POUNDS PER SQUARE INCH

- DO NOT POINT SPRAY GUN AT ANY PART OF THE HUMAN BODY
- FLUID UNDER HIGH PRESSURE CAN PENETRATE THE SKIN AND CAUSE SEVERE INTERNAL INJURY
- IN CASE OF INJURY OBTAIN MEDICAL ATTENTION IMMEDIATELY
- BE SURE TO REPORT NATURE OF INJURY AND TYPE OF FLUID OR SOLVENT TO THE DOCTOR

Be sure you understand ALL of the following instructions thoroughly BEFORE operating any part of the airless equipment system. CONSULT YOUR BINKS REPRESENTATIVE TO CLEAR UP ANY ITEMS OF INSTRUCTION YOU DO NOT UNDERSTAND.

1. UNDER NO circumstances should the spray gun be carelessly handled nor its spray (even when the nozzle is removed) directed at close proximity to any part of the human body.
2. DO NOT operate airless spray gun with tip guard housing removed or altered.
3. NEVER clean, change, or remove the nozzle from the spray gun without first doing the following:
 - a. Shut off pump and, in addition, unplug electrical cord or turn off air supply.
 - b. Release fluid pressure in the entire system, from pump or supply line to spray gun.
4. NEVER attempt to force the flow of liquid backward through the gun (blowback) with your finger, hand, or hand-held object pressed against the gun nozzle.
5. NEVER plug a hose leak with your finger, with adhesive tape, or other “stop-gap” device.
6. NEVER operate the airless system with a defective hose. ALWAYS replace the defective hose immediately. For continuing safety, users are urged to:
 - a. ALWAYS handle carefully all hose connections, joints, and seating surfaces on the spray gun to prevent damage.
 - b. NEVER kink or bend the fluid hose into less than a four inch radius.
 - c. FREQUENTLY check the hose for kinks or abrasions. These may develop into a rupture.
 - d. NEVER use standard hardware to modify the airless system. ALWAYS use Binks high pressure fittings only.
7. The airless pump must be grounded before operating the airless spray system.

INSTALLATION AND OPERATING INSTRUCTIONS

Your new Binks 550 Automatic Airless Spray Gun has been thoroughly tested before leaving the factory. No adjustments are required before spray operations begin other than installing the nozzle tip selected. The gun body has four holes which allow the material body to be mounted in any of four positions for convenient fluid hose hookup.

The following steps are recommended for obtaining best results from your spray gun:

1. Install spray gun on gun mount and tighten the set screw (9) securely. **Note:** The mounting hole is 1/2" diameter.
2. Connect air hose to fitting (16). The gun is actuated by air pressure from a 3-way valve. The valve provides air to trigger, shut-off, and exhausts air from the gun. The gun should be limited to 200 cycles per minute (maximum). Approximately 40 to 60 psi air pressure is required to operate the spray gun; however, use the minimum air pressure required.
3. Connect high pressure airless fluid hose to the gun material body assembly (7) and tighten.
4. Remove tip guard assembly (4), nozzle tip, and gasket (3) from spray gun (or remove Twist-Tip if used). Turn on air supply to operate air valve to spray gun. Turn on material supply very slowly and allow spray gun to trigger a few times to purge any entrapped air in fluid system.
5. Shut fluid supply and air supply OFF.
6. Replace gasket (3), nozzle tip, and tip guard assembly (4) (or Twist-Tip) as per safety procedure described in paragraph 3 above.
7. Turn air and fluid supply ON and check the spray pattern for proper atomization.

NOTE

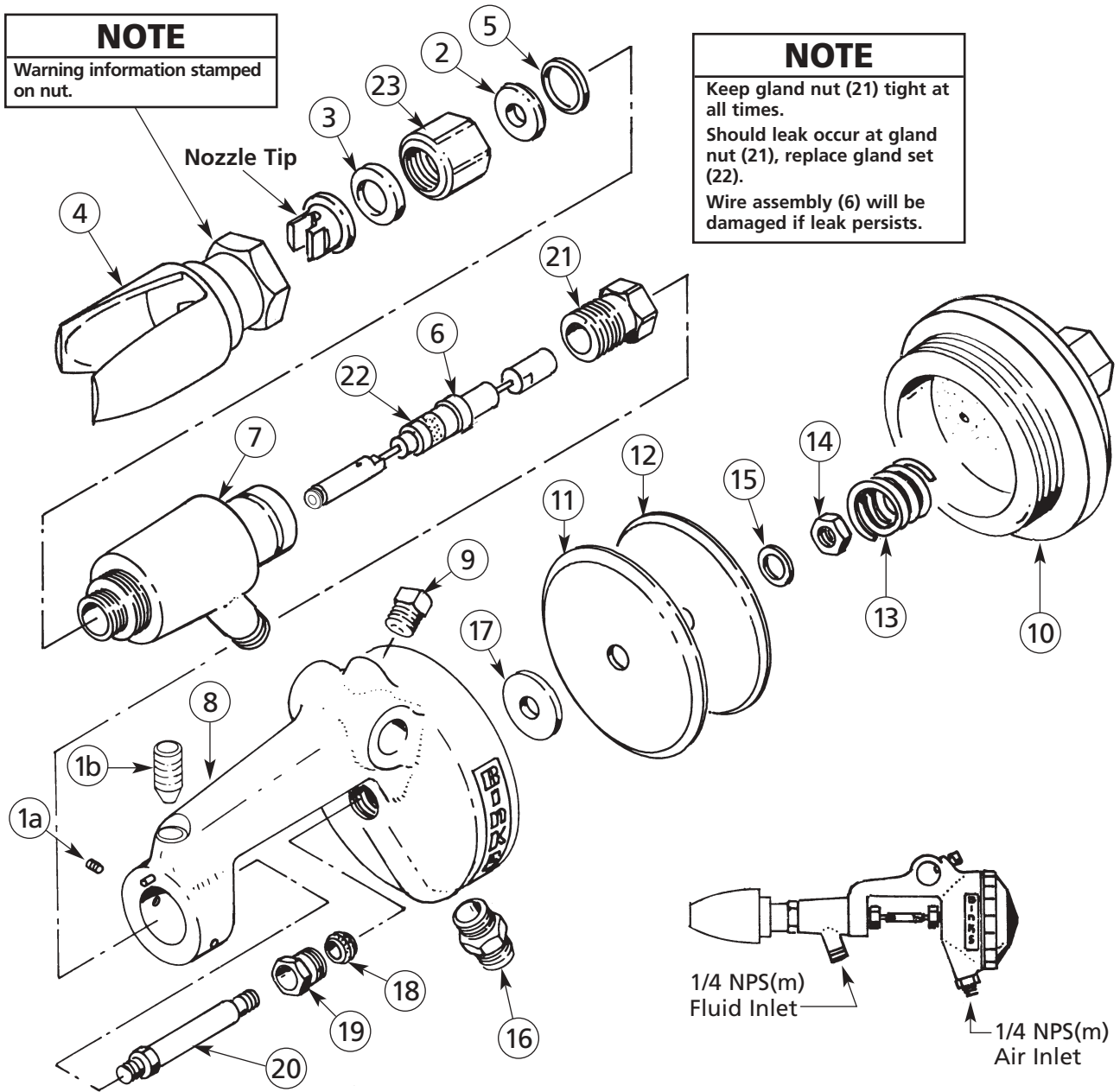
When the pattern is right, the pressure is right. Excessive fluid pressure will only distort the spray pattern.

8. The spray gun nozzle should be located at such a distance to the product where maximum fan pattern width is evident. This is usually 8" to 14". The spray pattern may be positioned either vertically or horizontally by rotating nozzle tip (or the Twist-Tip).
9. “Hour glass” or “tails” on the spray pattern normally indicates too low a fluid pressure for the nozzle tip being used; or, the material is too viscous.
10. A distorted spray pattern usually means a plugged or worn nozzle tip.
11. Using excessive fluid pressure will only cause undue wear of the nozzle tip.

Binks MODEL 550 AUTOMATIC AIRLESS SPRAY GUN

NOTE
Warning information stamped on nut.

NOTE
Keep gland nut (21) tight at all times.
Should leak occur at gland nut (21), replace gland set (22).
Wire assembly (6) will be damaged if leak persists.



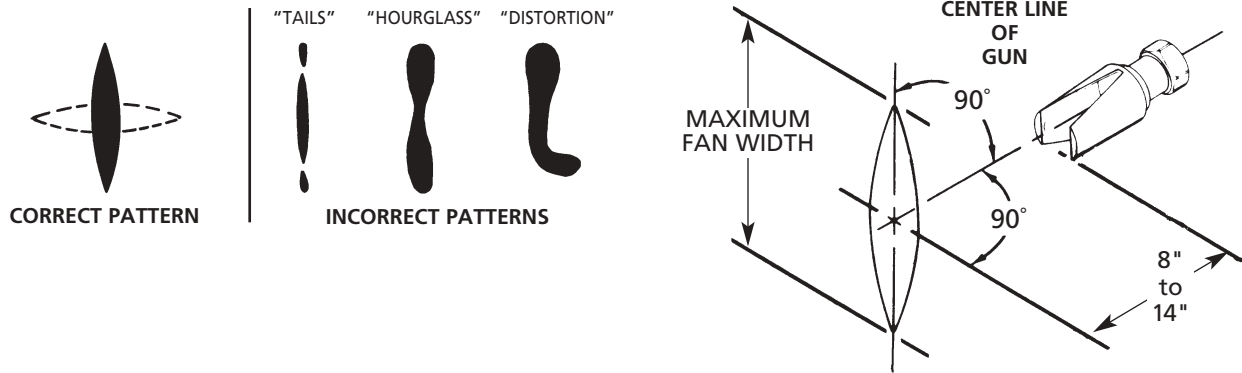
PARTS LIST

(When ordering, please specify Part No.)

ITEM NO.	PART NO.	DESCRIPTION	QTY.	ITEM NO.	PART NO.	DESCRIPTION	QTY.
1a	20-6705	SET SCREW 1/4-20 x 3/16" Long	2	11	54-3051†	DIAPHRAGM	1
1b	20-6130	SET SCREW 1/4-20 x 1/2" Long, with Nylock	1	12	54-3054	BACK PLATE	1
2	54-2931†	SEAT	1	13	54-3052†	SPRING	1
3	54-2229†	GASKET	1	14	20-5351	NUT 8-32	1
4	54-3085	TIP GUARD ASSEMBLY	1	15	20-5352	LOCKWASHER	1
5	54-2927†	SEAL	1	16	71-28	FITTING 1/8 NPT x 1/4 NPS	1
6	54-2956†	WIRE ASSEMBLY	1	17	54-3055	WASHER	1
7	54-3042	MATERIAL BODY ASSEMBLY	1	18	54-3053†	PACKING	1
8	54-3039	GUN BODY ASSEMBLY	1	19	54-3059	BEARING SCREW ASSEMBLY	1
9	20-1359	SET SCREW 5/16-18 x 5/8" Long	1	20	54-3056	STEM	1
10	54-3060	CAP ASSEMBLY	1	21	54-2964	GLAND NUT	1
				22	54-2949*	GLAND SET	1
				23	54-2928	SET CAP	1

† Also available in 54-3121 Repair Kit. Please order separately.
* Furnished with Wire Assembly (6).

Binks MODEL 550 AUTOMATIC AIRLESS SPRAY GUN



MAINTENANCE INSTRUCTIONS

(See High Pressure Warning Statement on Page 1)

TO CLEAN NOZZLE TIP:

1. BEFORE proceeding with any maintenance, read safety procedure, paragraph 3, in High Pressure Warning, page 1.
2. Remove tip guard assembly (4), nozzle tip, and gasket (3).
3. Submerge nozzle tip in solvent to remove dried material.
4. Blow air through nozzle tip to clean.
5. Airless spray nozzle tips are made of tungsten carbide and are very brittle. Do not drop. To clean a nozzle tip, use solvent, toothpick or sharpened match. Never use a metal probe.

TO REPLACE WIRE ASSEMBLY:

1. BEFORE proceeding with any maintenance, read safety procedure, paragraph 3, in High Pressure Warning, page 1.
2. For convenience, you may wish to remove spray gun from gun mount.

3. Carefully remove the cap (10). The spring (13) is under tension and will come out when cap (10) is removed.
4. Remove nut (14) and lockwasher (15). The back plate (12), diaphragm (11) and washer (17) may be removed at this time.
5. Loosen the wire assembly nut (6) from the stem (20).
6. Loosen and remove the bearing screw assembly (19) and the stem (20) from spray gun. The packing (18) should also be inspected at this time. If worn, replace.
7. Loosen and remove the gland nut (21). The wire assembly (6) may now be pulled rearward from the spray gun.
8. If worn, replace the gland set (22).
9. The material body assembly (7) may be removed for cleaning by loosening set screws (1). Note the pin in gun body assembly (8).
10. Reassemble in reverse order.

DIFFUSER ASSEMBLIES

Reduces fluid velocity to minimize tip wear and to aid fluid filtration. Order 54-2229 Nylon Gasket with either set-up, described below.

54-1639 thimble and 54-1640 (50 mesh) or 54-1797 (100 mesh) screen.

54-2378 Nut for use with 54-1835 (.005) 125 mesh or 54-1836 (.009) 60 mesh edge type filter.



54-1640

54-1639

54-2378

54-1835
54-1836

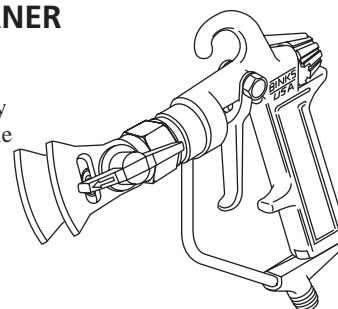
FLAT TIP ASSEMBLIES FOR AIRLESS GUNS

FAN WIDTH				FAN WIDTH				FAN WIDTH			
PART NUMBER	STAMPED NUMBER	ORIFICE (INCHES)	(12" FROM SURFACE)	PART NUMBER	STAMPED NUMBER	ORIFICE (INCHES)	(12" FROM SURFACE)	PART NUMBER	STAMPED NUMBER	ORIFICE (INCHES)	(12" FROM SURFACE)
9-1170	9-1170	.011	8-10	9-2140	9-2140	.021	10-12	9-3620	9-3620	.036	6-8
9-1180	9-1180	.011	10-12	9-2180	9-2180	.021	16-18	9-3640	9-3640	.036	12-14
9-1350	9-1350	.013	8-10	9-2190	9-2190	.021	18-20	9-3660	9-3660	.036	16-18
9-1360	9-1360	.013	10-12	9-2340	9-2340	.023	10-12	9-3680	9-3680	.036	18-20
9-1380	9-1380	.013	12-14	9-2640	9-2640	.026	12-14	9-4340	9-4340	.043	12-14
9-1550	9-1550	.015	8-10	9-3120	9-3120	.031	6-8	9-4380	9-4380	.043	18-20
9-1560	9-1560	.015	10-12	9-3140	9-3140	.031	12-14	9-5230	9-5230	.052	8-10
9-1590	9-1590	.015	14-16	9-3180	9-3180	.031	18-20	9-5240	9-5240	.052	12-14
9-1840	9-1840	.018	10-12					9-6230	9-6230	.062	8-10
9-1860	9-1860	.018	12-14								
9-1890	9-1890	.018	16-18								

BINKS TWIST-TIP REVERSIBLE NOZZLE CLEANER

Orifice Size	Material
.011 to .013	Lacquers and Stains
.015 to .019	Oil and Latex
.021 to .051	Heavy-Bodied Latex and Block Filler

The Twist-Tip Nozzle Cleaner allows purging of a clogged nozzle orifice without disassembly from the spray gun. The tungsten carbide nozzle is permanently assembled into the rotatable cylinder tip insert and handle assembly. No alignment or adjustments are required.



AIRLESS TWIST TIP CHART

SURFACE	COATING	FAN WIDTH (in inches)	ORIFICE SIZE									
			.009	.011	.013	.015	.017	.019	.021	.023	.035	.051
Wood Interior Cabinets, Paneling	Stain, Sanding	6"	309	311	313	-	-	-	-	-	-	-
	Sealer, Lacquer	8"	-	-	413	-	-	-	-	-	-	-
	Varnish, Shellac, Enamels	10"	-	-	513	-	-	-	-	-	-	-
Interior Walls Ceilings, Drywall Plaster	Latex, Vinyl Acrylic	6"	-	-	-	315	-	-	-	-	-	-
		8"	-	-	-	415	417	419	-	-	-	-
		10"	-	-	-	515	517	519	-	-	-	-
		12"	-	-	-	615	617	619	-	-	-	-
Overhang	Primers, Enamels	6"	-	-	-	315	-	-	-	-	-	-
		8"	-	-	-	415	417	-	-	-	-	-
		10"	-	-	-	515	517	-	-	-	-	-
		12"	-	-	-	-	-	619	-	-	-	-
Masonry Block, Stucco, Concrete	Vinyl, Acrylic Latex, Oil Base, Alkyds	8"	-	-	-	-	417	-	-	-	-	-
		10"	-	-	-	-	517	519	521	-	-	-
		12"	-	-	-	-	-	-	621	-	-	-
Wood Exterior Shingle Siding, Shiplap	Exterior, Stains Latex, Vinyl, Acrylic	10"	-	-	-	-	517	519	521	-	-	-
		12"	-	-	-	-	-	-	621	-	-	-
Open Joist Ceiling Areas	MIL White HI Build	10"	-	-	-	-	-	519	521	523	535	551
		12"	-	-	-	-	-	-	621	-	-	-

BASE RETAINERS

Assembly Number	454-3 3/4 – 20 Binks	454-5 7/8 – 14 (G) Graco, Titan, Wagner
-----------------	----------------------------	--

Ordering: For twist tips add the prefix 454- to size tip selected. For example, if you select 517, order as 454-517.

BINKS
195 Internationale Blvd.
Glendale Heights, IL 60139

2120R-8 Revisions: (P3) 54-2208 Nut is obsolete; (P4) All information is new.

Part Sheet 2120R-8 Printed in USA 9/02, All Rights Reserved