



# Binks Model 30 AUTOMATIC GLASS BEAD DISPENSING GUN

The Model 30 Glass Bead Dispensing Gun delivers glass beads at the rate of up to 20 lbs. per minute. (A pressure tank with follower plate and bottom outlet is recommended for supply of glass beads to the gun.) Air for atomization is not required.

“On-off” of the gun is provided by the air cylinder. It is located at the rear of the gun body. The minimum recommended air pressure to the cylinder is 50 PSIG.



## CAUTION

**The gun should never be operated without having the guard (28) installed. All threads, including the hose connections, should be clean of beads before mating. The needle (15) should always be kept clean.**

## INSTALLATION

Mount the Model 30 gun on a 1/2" diameter steel rod. (Not furnished with gun. Please order separately, Model 54-380.) The rod should have a flat area to receive the mounting screw (19) for locking the gun to the rod. Attach the air hose to the 1/4" NPS(m) nipple (21) and attach the glass bead supply hose to the 3/4" NPS(m) inlet on the gun head (16).

## NOTE

**Be sure mating threads are clean of beads.**

Depending on the delivery required, select the appropriate nozzle (orifice) insert (13) and install into the deflection nozzle (12). Install this assembly (14) into the gun and fasten securely with retainer ring (10) and o-ring (11).

## NOTE

**Be sure mating threads are clean of beads.**

## DISASSEMBLY INSTRUCTIONS

Read entire disassembly instructions before attempting repairs. Do only that which is required to repair a specific trouble. Complete disassembly may not be required.

1. Remove the screw (27) and guard (28).
2. Remove cap (3), control screw (1) and lock-nut (2).  
Remove springs (4) and (5).
3. Remove nozzle assembly (14) by unscrewing retainer ring (10).
4. Using a 11/16" socket, hold piston rod (6) and loosen nut (22) with a 7/16" wrench.
5. Unscrew needle (15) from piston rod (6) and nut (22).  
Remove take-up screw (23) from gun head (16). Since o-ring (24) and take-up screw (23) offer resistance to removal from needle (15), unscrew take-up screw (23) from needle (15), rather than pulling forcefully. Remove needle (15) from front of gun head (16).
6. Remove wiper (25) and retainer (26) from gun head (16).
7. Remove piston rod (6) and piston (8) by feeding air into the air inlet (21) at 5-10 PSIG.
8. Remove screw (17) and lockwasher (18) and separate gun body (20) from gun head (16).

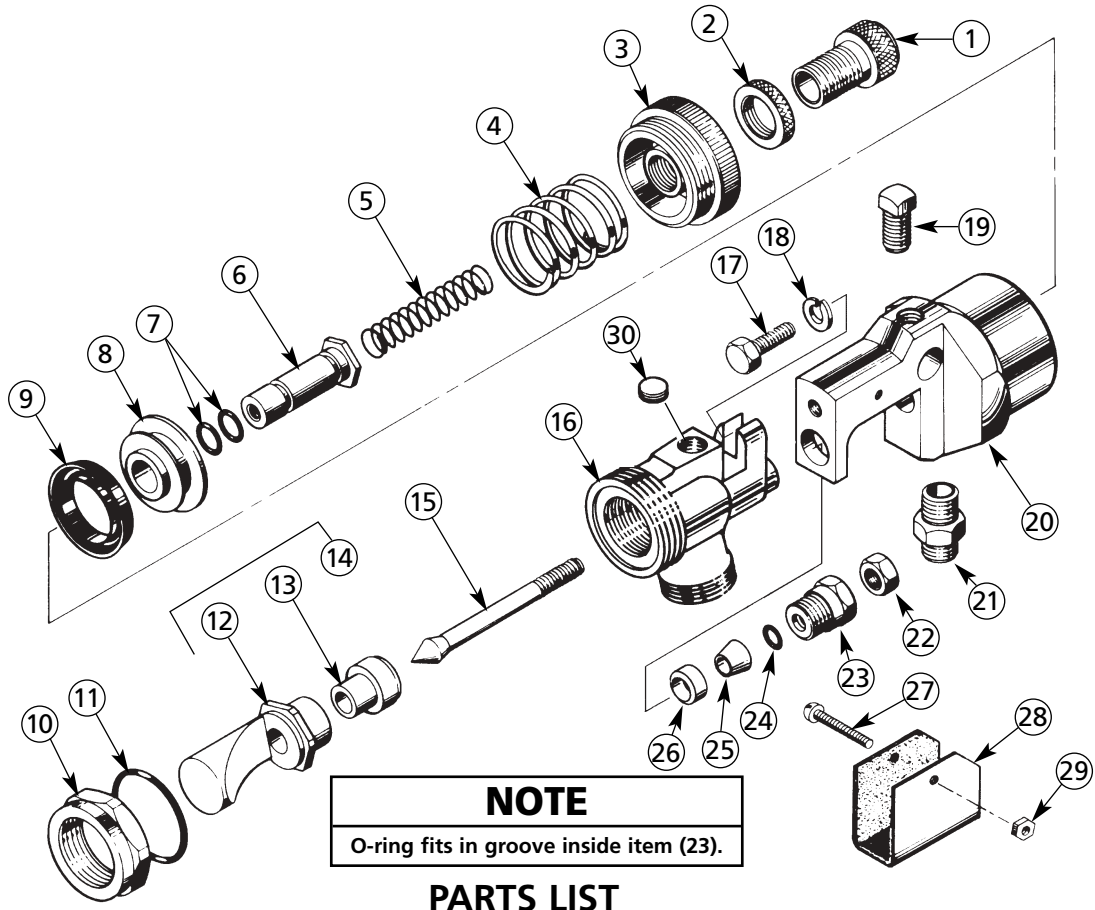
## ASSEMBLY INSTRUCTIONS

Before assembling gun, clean off all mating surfaces and remove any beads clinging to them.

1. Attach gun head (16) to gun body (20) with screw (17) and lockwasher (18).
2. Insert needle (15) through front of gun head (16). Check wiper (25) and retainer (26) and replace if worn or damaged. Install retainer (26) and wiper (25) through rear of gun head (16) onto needle (15).
3. Check o-ring (24) and replace if worn or damaged. Seat o-ring (24) correctly into take-up screw (23). Screw take-up screw o-ring assembly (23, 24) over needle threads (15) and into gun head (16) to finger tightness and tighten additionally 1/8 to 1/4 turn by wrench.
4. Screw nut (22) onto needle (15).
5. Check u-cup (9) and two o-rings (7) and replace if worn or damaged. Seat two o-rings (7) correctly onto piston rod (6) and seat u-cup (9) correctly onto piston (8). Insert piston rod (6) through piston (8) and insert piston rod/piston assembly (6, 8) into gun body (20).
6. Push piston rod (6) all the way into gun body (20) and hold it there with 11/16" socket wrench. Screw needle (15) deep into piston rod (6) while, at same time, turning nut (22), as required, to avoid “lockup”.
7. Hold gun with nozzle end up. Insert nozzle assembly (14). Do not install retainer ring (10).
8. Unscrew piston rod (6) with socket wrench, while pushing on piston rod (6) and allow needle (15) to “lift” nozzle assembly (14) 3/32" off gun head (16).
9. While preventing needle (15) from turning, and while pushing on piston rod (6), screw nut (22) forward so as to lock against take-up screw (23). Tighten nut (22) securely with 7/16" wrench.
10. Install spring (4) and cap (3).
11. Install spring (5), lock-nut (2) and control screw (1).
12. Select appropriate nozzle insert (13) and insert into deflection nozzle (12). Insert nozzle assembly (14) into gun head (16).
13. Check o-ring (11) and replace if worn or damaged. Seat o-ring (11) correctly onto gun head (16).
14. Screw retainer ring (10) onto gun head (16) and make hand tight.
15. Attach guard (28) with screw (27) and nut (29).

Replaces Part Sheet 2151R-3 | Part Sheet 2151R-4

# Binks Model 30 AUTOMATIC GLASS BEAD DISPENSING GUN



**NOTE**  
O-ring fits in groove inside item (23).

## PARTS LIST

When ordering, please specify Part No.

ITEM NO.	PART NO.	DESCRIPTION	QTY.	ITEM NO.	PART NO.	DESCRIPTION	QTY.
1	54-1195	CONTROL SCREW .....	1	16	54-1208	GUN HEAD .....	1
2	54-323	CONTROL SCREW LOCKNUT .....	1	17	20-783-1	SCREW, HEX HEAD .....	1
3	54-1196	CAP .....	1			1/4"-20 x 5/8" Long .....	1
4	54-236	SPRING .....	1	18	20-1041-1	LOCKWASHER .....	1
5	54-1648▲	SPRING .....	1	19	54-335	MOUNTING SCREW .....	1
6	54-1197	PISTON ROD .....	1	20	54-1194	GUN BODY .....	1
7	20-2369▲	O-RING .....	2	21	57-13	D.M. NIPPLE 1/4" NPS x 1/4" NPT .....	1
8	102-2059	PISTON .....	1	22	20-301-1	HEX NUT 1/4"-20 .....	1
9	20-3723▲	U-CUP .....	1	23	54-1198	SCREW .....	1
10	52-1635	RETAINER RING .....	1	24	20-3620▲	O-RING .....	1
11	20-3829▲	O-RING .....	1	25	54-3114▲*	WIPER .....	1
12	45-102■	DEFLECTION NOZZLE .....	1	26	54-3113▲*	RETAINER .....	1
13	45-103■	NOZZLE INSERT 7/32" Dia. ....	1	27	20-4827	SCREW, ROUND HEAD .....	1
13	45-104■	NOZZLE INSERT 1/4" Dia. ....	1			6-32 x 1 1/4" Long .....	1
13	45-105■	NOZZLE INSERT 9/32" Dia. ....	1	28	54-1199	GUARD .....	1
13	45-106■	NOZZLE INSERT 11/32" Dia. ....	1	29	20-412-1	NUT 6-32 .....	1
14	45-101	DEFLECTION NOZZLE and INSERT ASSEMBLY .....	1	30	20-2287-1	PIPE PLUG 1/8" NPT SOC Head .....	1
15	47-458	NEEDLE .....	1	—	6-1287	OPTIONAL: 1/2" BIG BORE KIT ....	1

▲ Also available in 6-271 Repair Kit. Please order separately.  
 ■ Part of 45-101 Assembly.  
 \* Also available in 54-3116 Wiper Kit. Please order separately.

Sales and Service Through a Nationwide Network of Industrial Distributors.

**Customer Service in USA / 1-800-992-4657**  
**Technical Support in USA / 1-888-992-4657**