



*First choice when
quality counts.™*

TexSpray™ Series Sprayers

PACKAGES

**Efficient
Performance
for Interior
and Exterior
Texture
Applications**



Get Graco. Experience The Difference.™

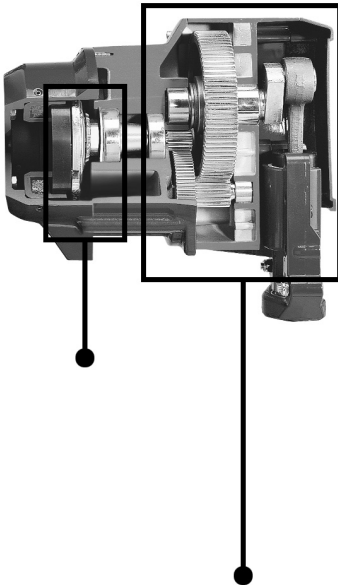


The Quality Difference.

Graco's quality difference for over 70 years has been to exceed the industry standard in design, manufacturing and assembly of every component. Our engineering staff is progressively designing technologically advanced products on sophisticated computer-aided design equipment, then performs extensive field tests. Once field tests are complete, each component undergoes extensive life-cycle testing to ensure that our TexSpray products provide the quality difference and perform to meet your application requirements.

The Graco Direct Drive Assembly

A dry oil-less system eliminates periodic oil level maintenance, oil and filter changes, and messy hydraulic oil leaks. Simple, trouble-free and covered with a lifetime warranty.

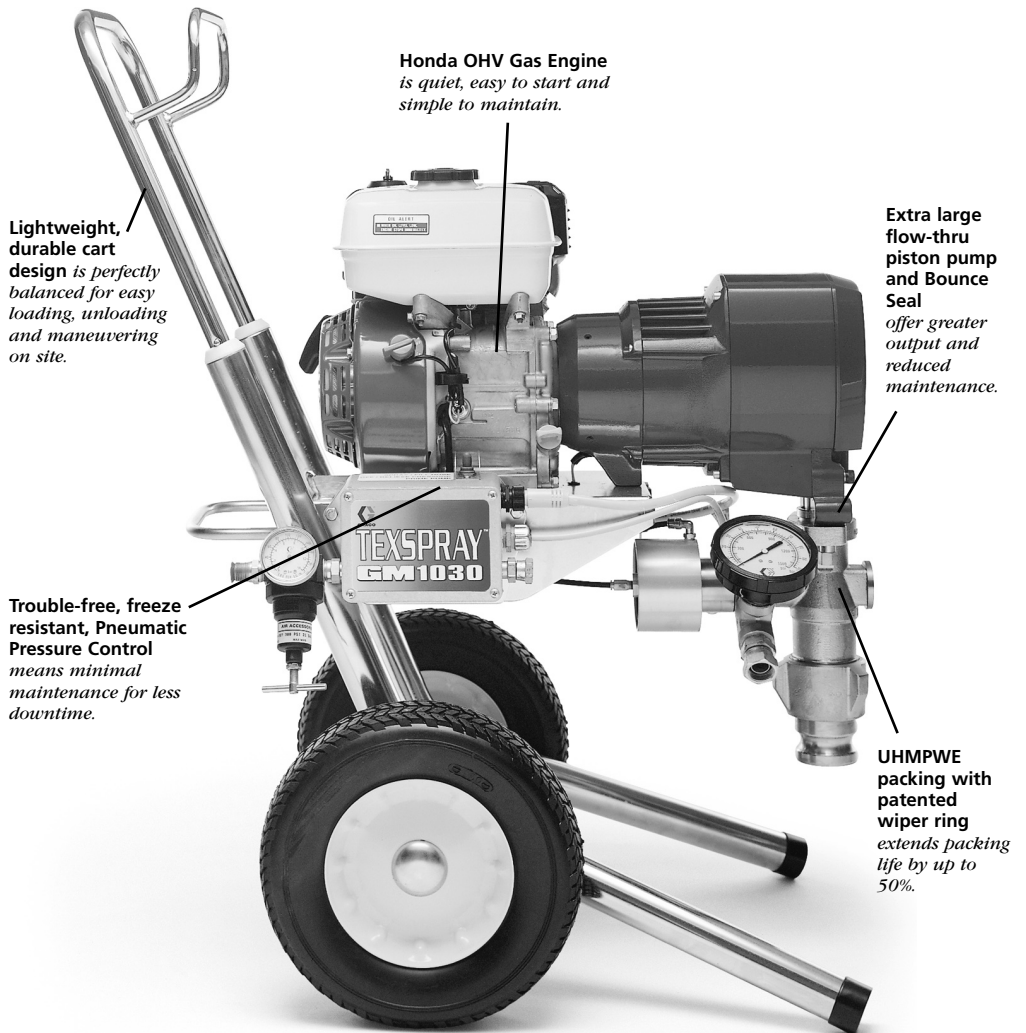


Permanently grease lubricated and case-hardened for superb reliability and maintenance-free operation.

Highest-Performance System
Transfers 95% of the usable horsepower into pumping energy.

All Graco Texture Sprayers also pass extensive quality assurance tests. Our manufacturing facility is equipped with state-of-the-art computerized machinery measuring exact tolerances to ensure consistent quality. So even though you cannot always see the Graco quality difference, it's in there.

The Quality Inside!



Honda OHV Gas Engine
is quiet, easy to start and simple to maintain.

Lightweight, durable cart design
is perfectly balanced for easy loading, unloading and maneuvering on site.

Extra large flow-thru piston pump and Bounce Seal
offer greater output and reduced maintenance.

Trouble-free, freeze resistant, Pneumatic Pressure Control
means minimal maintenance for less downtime.

UHPWE packing with patented wiper ring
extends packing life by up to 50%.



The Warranty Difference.

We build it. We back it. Period.

Because Graco leads the industry in quality design and performance, we're able to offer the best overall warranty. This allows you to buy with confidence and gives you low, long-term cost of operation, high resale value and maximum performance.

Our warranty is also easy to use and there is no complicated paperwork. This warranty is in addition to the standard Graco warranty*.

1-Year Bumper-to-Bumper Warranty

Graco will repair or replace any defective component for the original owner for one year from the date of purchase. The fluid pump is limited to a one-time replacement. This warranty does not cover consumable wear items such as filters, tips, guns packing kits, TSL, engine oil, etc.

Lifetime Warranty on the Gear Train

The original owner is promised a lifetime warranty on the gear train.

High Resale Value

When you purchase a new Graco TexSpray product, it is also important to consider the long-term resale value. There is a difference in Graco equipment which is typically 20% to 30% higher in resale value.

Downtime Eliminator™ Program

Graco's extensive distributor network provides you with parts and service throughout North America. If the warranty part you need is not in stock at your local distributor, Graco offers FREE overnight, next business day delivery, when your distributor places your order by 2 p.m. Central Standard Time.

Large Distributor Network

Over 450 authorized parts and service centers and more than 5400 distributor locations stand behind Graco products. You can trust these experts to provide quick, reliable service with genuine Graco parts and accessories.

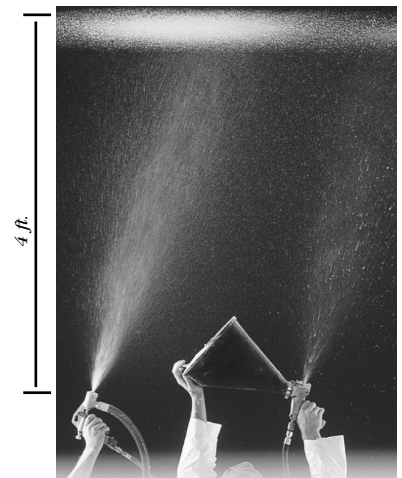
Assistance is just a phone call away

Please call 1-800-690-2894 to speak with one of our customer service representatives.

** Outside the United States and Canada not all conditions of the Bumper-to-Bumper warranty may apply. Please contact your local distributor for more complete details.*

"A recent job involved spraying custom homes with high vaults and nine foot ceilings. Another job involved spraying several 12 foot vaults from the floor. I didn't use stilts or scaffolding and never had to refill. You can't do that with a hopper gun!"

Monte Grayden, President
Drywall Repair Service Inc.
Oakdale, MN



HIGHER PRODUCTION WITHIN REACH

TexSpray not only projects texture 3-4 feet (0.9-1.2 m), but at unsurpassed production rates! The average hopper gun only projects texture 1-1½ feet (0.3 - 0.45 m).



The Performance Difference.

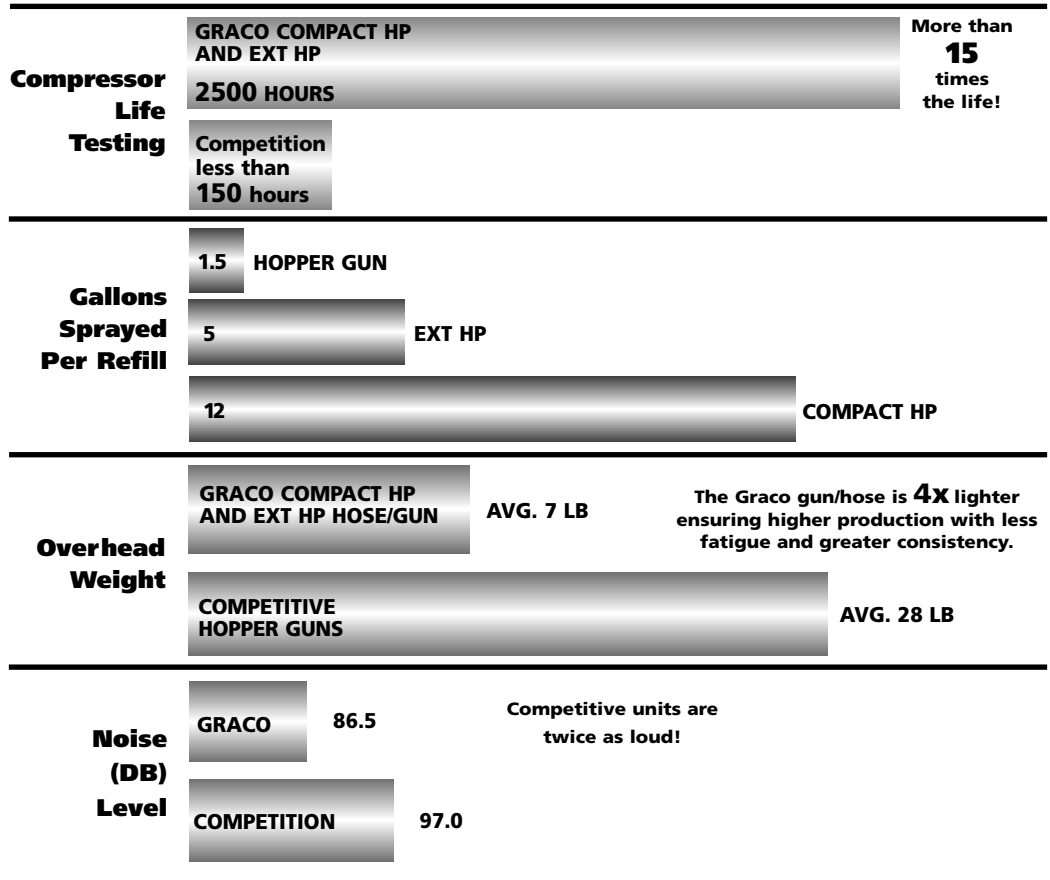
Graco's reliable and durable TexSpray models are the top performing texture sprayers available. All of Graco's texture sprayers use Graco proven pump designs so you always get performance, efficiency and long pump life.



"We spray hundreds of thousands of square feet of texture each year using hopper guns and Rotor/Stator Systems. But none match the ease of operation, quality and production speed of the TexSpray unit."

Herb Chanson
Olympic Wall Systems, Inc.
Minneapolis, MN

TexSpray HP Series Provide Optimum Performance



Graco TexSpray Application Versatility

	Airless Spray	Stain	Primer	Blockfiller	Elastomeric	Mud	Texture
Compact HP & EXT HP	<input type="checkbox"/>	<input type="checkbox"/>	<input type="checkbox"/>	<input type="checkbox"/>	<input checked="" type="checkbox"/>	<input checked="" type="checkbox"/>	<input checked="" type="checkbox"/>
Mark V	<input checked="" type="checkbox"/>	<input checked="" type="checkbox"/>	<input checked="" type="checkbox"/>	<input checked="" type="checkbox"/>	<input checked="" type="checkbox"/>	<input checked="" type="checkbox"/>	** <input checked="" type="checkbox"/>
GM1030	* <input checked="" type="checkbox"/>	* <input checked="" type="checkbox"/>	* <input checked="" type="checkbox"/>	<input checked="" type="checkbox"/>	<input checked="" type="checkbox"/>	<input checked="" type="checkbox"/>	<input checked="" type="checkbox"/>
Competitive Rotor/Stator	<input type="checkbox"/>	<input type="checkbox"/>	<input type="checkbox"/>	<input type="checkbox"/>	<input checked="" type="checkbox"/>	<input checked="" type="checkbox"/>	<input checked="" type="checkbox"/>

*WHEN USED WITH OPTIONAL 3012 LOWER

** CREATE THE DESIRED TEXTURE FINISH WITH SMOOTH DRYWALL MUD

Features Make The Difference.

TexSpray Compact HP	EXT HP & Twin Tank	Mark V	GM1030
V-twin oil-less compressor operates at 1800 RPM for improved performance and reliability with 30% quieter operation.	V-twin oil-less compressor operates at 1800 RPM for improved performance and reliability with 30% quieter operation.	Pump drywall mud for skim-coating, joint filling and nail hole patching.	High output - sprays texture from 3/4 to 3 gallons (2.8 to 11 liters) per minute.
High capacity 12 gallon (45 liter) hopper maximizes production time, adds material consistently and minimizes drying time.	Large 5 gallon (94.6 liter) pressure pot with oversized bottom outlet gently transfers sensitive texture mixes to the gun.	Airless spray common lacquers, paints and blockfillers.	Fully adjustable, high pressure spray from 100 to 1000 psi (68 to 680 bar). Designed to spray heavy elastomers with up to 200 ft. (61 m) of hose.
The innovative, double diaphragm texture pump efficiently loads heavier textures with its unique dual inlet design. It gently handles the most sensitive texture mixes.	The floating follower plate keeps the material from skimming over and seals the tank outlet to prevent air from entering the material hose.	Efficiently and consistently apply lightweight texture finishes.	Compact, lightweight design provides easy loading/unloading and maneuvering on job site.
New duckbill valve eliminates traditional ball check valves, allowing handling of larger size aggregate and minimizing material separation at the inlet and outlet valves.	The tank is rated to 105 psi (7.1 bar, .71 MPa), to allow the transfer of heavy texture mixes. This also allows the potential for additional hose lengths.	Spray drywall mud at rates from 1 to 1.25 gpm (3.8 to 4.7 lpm) with up to 200 ft (60.2 m) of hose.	Unique extra large "flow-thru" Bounce Seal™ piston pump allows texture movement. This prevents the pump from packing out, minimizing downtime.
Unlike competitive pump designs, the Graco texture pump can actually run dry without damage.	Optional second tank kit allows tank refills with little to no downtime.	Spray up to 18 in. (45 cm) wide patterns for painting, skim coating or texture spraying, or use a 4 to 12 in. (10 to 21 mm) wide pattern for filling gypsum joints.	Hard chrome over stainless rod and cylinder is corrosion resistant for a long pump life with abrasive materials.
Unloader valve allows the compressor to free-wheel to reduce compressor wear while precisely managing air pressure.	Unloader valve allows the compressor to free-wheel to reduce compressor wear while precisely managing air pressure.	Airless spray paint up to 1.25 gpm (4.7 lpm) with up to 300 ft (91.4 m) of hose.	Easy Spray™ controls (on/off and prime) provide quick start-up and clean-up with no maintenance.
Cart frame air passages reduce plumbing and increase air flow and fluid pressure by 30% for improved atomization.	Cart frame air passages reduce plumbing and increase air flow and fluid pressure by 30% for improved atomization.	Oversized clearances in the fluid section allow pumping of extremely viscous materials.	Quick disconnect siphon hose for 5 to 55 gallon (19 to 208 liter) containers eliminates hoppers.
Rugged professional grade steel cart frame. Reinforced solid axle with 10 in. (254 mm) diameter CareFree,™ no-flat tires and large ball bearings provide easy movement around construction sites.	Rugged, professional grade steel cart frame. Reinforced solid axle with 10 in. (254 mm) diameter CareFree,™ no-flat tires and large ball bearings provide easy movement around construction sites.	Pump and spray drywall mud with smooth consistent coverage, at rates up to ten times faster than hand or hopper guns.	Quick knock-down pump inlet enables quick clean-out if texture clogs the inlet.
Removable stainless steel inlet screen prevents building materials from entering the pump.	Twin Tank's compressor-less design uses air from an external source to eliminate the dependency on power poles at new construction sites.	Powerful DC electric motor allows long extension cord use and draws little amperage.	Quick change pump kit provides convertibility from texture sprayer to airless sprayer.
Trigger, Flexhead™ and 3 ft (1 m) pole guns are available. Select the gun that best meets your application requirements.	Trigger, Flexhead™ and 3 ft (1 m) pole guns are available. Select the gun that best meets your application requirements.	Precise, patented pressure control maintains consistent pressure for smooth material flow.	Fine Finish™ dual orifice texture spray discs are reversible for longer life, a high quality finish and up to 3 ft (1 m) wide spray fans, virtually eliminating narrow lap marks.



The Product.

TEXSPRAY™ MARK V & GM5000HD

The Mark V is the most versatile sprayer in our TexSpray product line. It not only sprays very fine orange peel to heavy knockdown finishes, but also latex, stain, light specialty coatings, lacquers and blockfillers.

231-406 TexSpray Mark V

Complete sprayer includes: 50 ft (15.2 m) of 3/8 in. hose, heavy duty texture gun, 221-231 Tip and Reverse-A-Clean™ (RAC) Dripless™ Tip Guard.

- **Tip Size** — 1 gun to 0.035 in. tip, 2 guns to 0.025 in. tip, 3 guns to 0.019 in. tip with latex at 2000 psi (138 bar, 13.8 MPa)
- **Delivery** — 1.25 gpm (4.7 lpm) max
- **Working Pressure** — 3000 psi (210 bar, 21.0 MPa) max
- **Power Requirements** — 120 VAC, 60 Hz, 1 phase, 15 amp minimum or 3000 watt generator
- **Motor Size** — 1.5 HP, DC, totally-enclosed, fan-cooled
- **Hose** — Up to 300 ft (91.4 m) max
- **Weight** — 122 lb (55 kg) max
- **Dimensions** — 22.5 in. W x 25 in. L x 31 in. H (572 mm W x 616 mm L x 813 mm H)
- **Instruction Manual** — 308-785



"We currently use two Mark Vs for applying knockdown wall textures for new hotel construction. They are twice as fast as our other texture equipment, and offer an extremely consistent pattern and material flow. The gun and hose are much lighter and more flexible than others I've used. We also like the simple design that isn't foreign to my people, so everyone learns very quickly. And it's nice to know, in a pinch, the Mark V is always available to spray blockfiller, primer and paint."

Dave Zajack
Shop Manager
All Tech Decorating Company
Lemont, IL



687-247 GM5000HD

The gas-driven equivalent to the Mark V. Complete with texture gun, 50' (15.2 m) of 3/8" hose, GHD-527, Tip Guard, swivel & whip hose.

Gear housing comes with a lifetime warranty to assure low cost maintenance.

High pressure design allows common hose lengths of up to 100 ft (30.5 m) or more.

Fluid section has oversized clearances to ensure minimal pressure drop and surge-free performance for consistent texture applications.

Submerged inlet and outlet checks efficiently pump the heaviest materials.

Mark V

Lightweight texture gun and hose dramatically increase production rates.



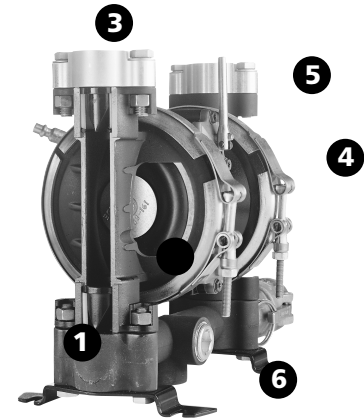
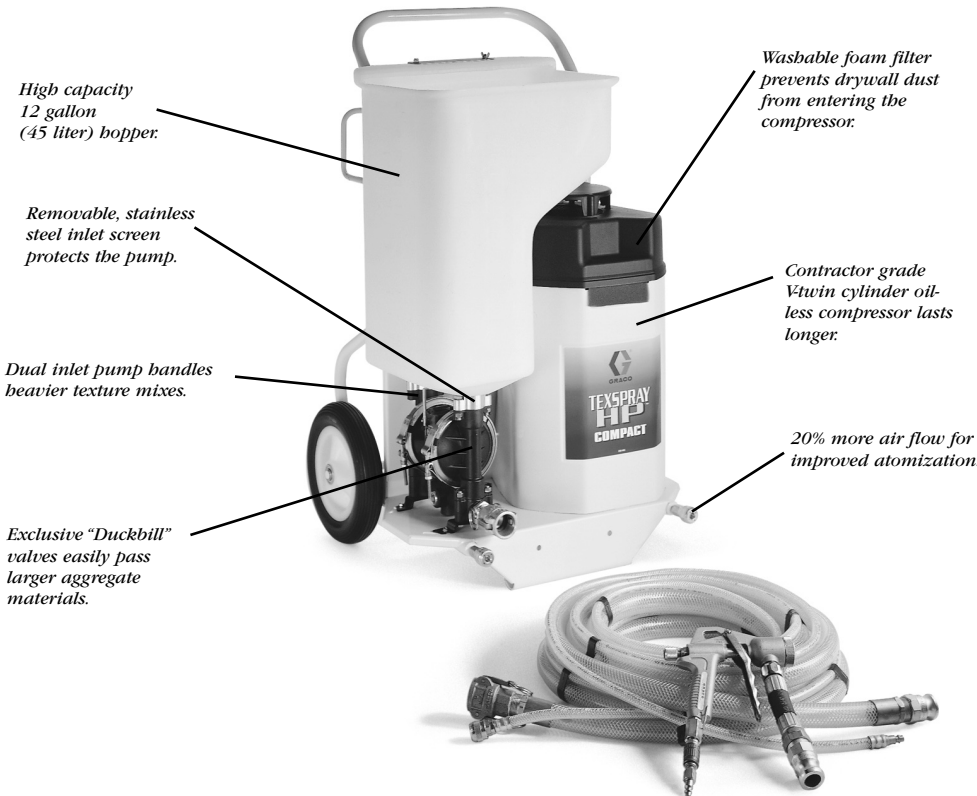
TEXSPRAY™ COMPACT HP

The TexSpray Compact HP provides professional results in both residential and commercial applications. Ideal for spraying interior simulated acoustics from fine to coarse grades and wall textures such as knockdown, splatter coat and orange peel.

- 231-780 TexSpray Compact with Trigger Gun
- 231-782 TexSpray Compact with Flexhead Gun
- 231-783 TexSpray Compact with 3 ft (1 m) Pole Gun

Complete sprayer includes: 1 in. (25.4 mm) x 25 ft (7.6 m) clear braid hose and 4 texture tips.

- **Delivery** — 1-1.5 gpm (3.8-5.7 lpm) typical
- **Working Pressure** (air and fluid) — 100 psi (7 bar, 0.7 MPa) max
- **Compressor Type** — AC brushless open motor, thermally protected, oil-less
- **Compressor Air Output** — 11.9 displacement scfm
8.5 scfm @ 40 psi (0.238 m³/min. at 2.8 bar)
6.8 scfm @ 90 psi (0.19 m³/min. at 6.3 bar)
- **Hopper Capacity** — 12 gal (45 l)
- **Power Requirements** — 120 VAC, 60 Hz, 1 phase (240 VAC, 50 Hz, 1 phase)
- **Dimensions** — 24 in. W x 23 in. L x 40 in. H
(610 mm W x 584 mm L x 1016 mm H)
- **Weight** — 113 lb (51.3 kg)
- **Instruction Manual** — 308-718



Double Diaphragm Texture Pump

- 1** Graco designed for texture! The duckbill valves pass larger aggregate sizes than ball check pumps, expanding the range of textures the Compact HP will pump.
- 2** Cycle indicator anti-stall device gives the operator a visual indication of pump operation (pumping, stall or run-away).
- 3** Two pump inlet valves are located right at the hopper feed ports, enabling the pump to handle heavier textures and drywall mixes.
- 4** The high volume texture pump (up to 15 gpm with water) cleans up faster than traditional texture pumps. Unlike Rotor/Stator pumps, the Graco pump can run dry without damage.
- 5** Sensitive texture mixes flow directly into the pump without unnecessary stress caused by frequent directional and velocity changes common with other designs.
- 6** Quick Disconnect Pump Outlet eliminates pipe threads for faster hose connection and clean-up.



The Product.

TEXSPRAY™ EXT HP

Excellent for residential and commercial interior and exterior applications. Sprays most textures including gypsum, elastomerics, stone paints, EIFS, deck coatings, plaster and some cement base materials.

HELPFUL HINT

COMPACT HP, EXT HP AND TWIN TANK

Maximize your TexSpray's performance by upgrading to the optional 1 1/4" ID fluid hose. With this simple addition, production rates can more than double, while maintaining the same hose length and pump/tank outlet pressure. Or use two 1/4" ID hose upgrade(s) and double the hose length. You'll gain up to four times the effective coverage area, while still achieving the same consistent texture finish.

- 231-761 TexSpray EXT HP with Trigger Gun and Fine Finish Kit
- 231-762 TexSpray EXT HP with Flexhead Gun
- 231-763 TexSpray EXT HP with 3 ft (1 m) Pole Gun
- 239-031 Optional Twin Tank Kit

Complete sprayer includes: 1 in. (25.4 mm) x 25 ft (7.6 m) clear braid hose and 4 texture tips.

- **Delivery** — 1-1.5 gpm (3.8-5.7 lpm) typical
- **Working Pressure** (air and fluid) — 100 psi (7 bar, 0.7 MPa)
- **Compressor Type** — AC brushless open motor, thermally protected, oil-less
- **Compressor Air Output** — 11.9 displacement scfm
8.5 scfm @ 40 psi (0.238 m³/min at 2.8 bar)
6.8 scfm @ 90 psi (0.19 m³/min at 6.3 bar)
- **Pressure Pot** — 5 gal (18.9 l)
- **Power Requirements** — 120 VAC, 60 Hz, 1 phase (240 VAC, 50 Hz, 1 phase)
- **Dimensions** — 24 in. W x 23 in. L x 40 in. H
(610 mm W x 584 mm L x 1016 mm H)
- **Weight** — 124 lb (56.3 kg)
- **Instruction Manual** — 308-717

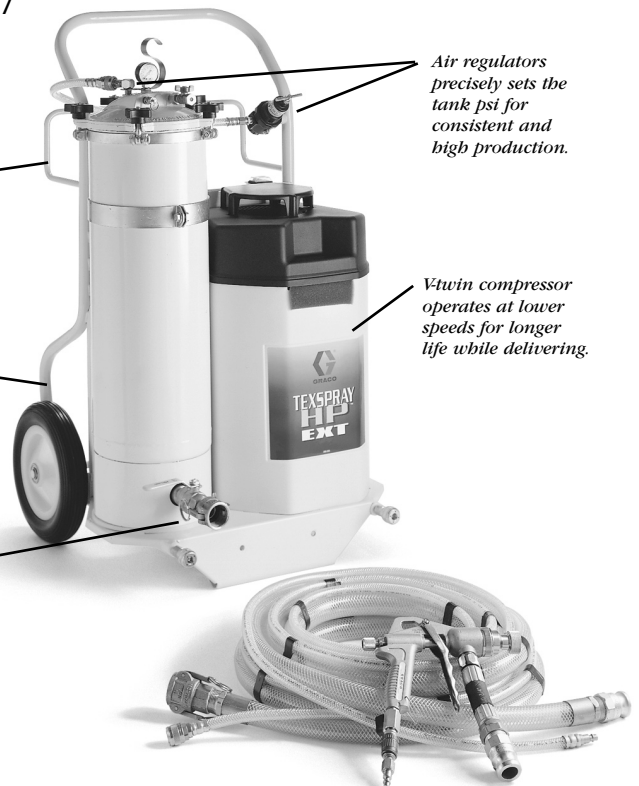
Taller heavy duty cart with hose rack allows easy banding around construction sites.

Extended cart frame allows all HP models to be pulled up stairways without banging up in the tread boards.

Additional air quick disconnect enables the operation to use an external compressor for a higher performance level.

Air regulators precisely sets the tank psi for consistent and high production.

V-twin compressor operates at lower speeds for longer life while delivering.





TEXSPRAY™ TWIN TANK EXT

Twice the capacity doubles the job site production between refills. The twin tank model allows one person to refill one pressure pot while the operator continues to spray from the other tank. Sprays most textures including gypsum, elastomerics, stone paints, EIFS, deck coatings, plasters, cement base and multi-color.

231-753 TexSpray Twin Tank with Trigger Gun and Fine Finish Kit

231-754 TexSpray Twin Tank with Flexhead Gun

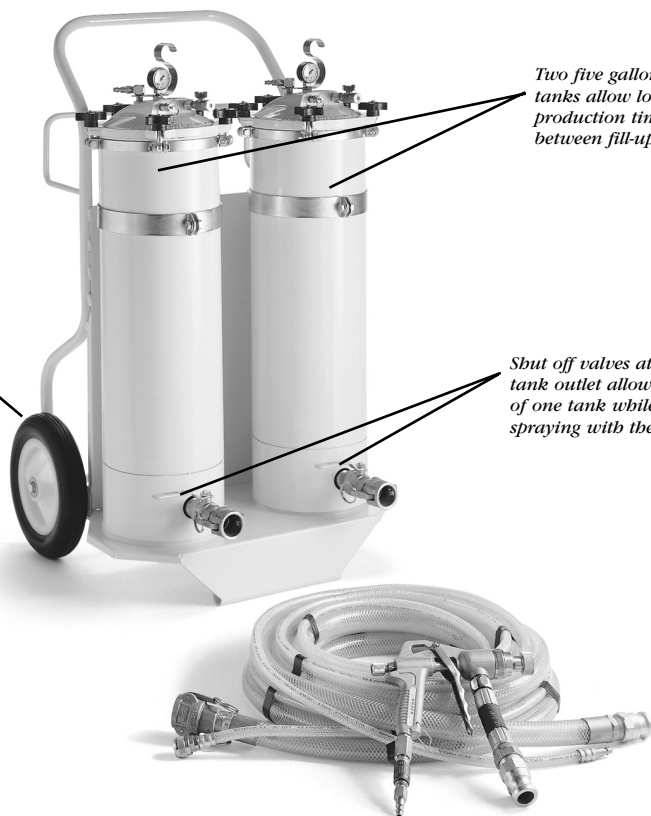
231-755 TexSpray Twin Tank with 3 ft (1 m) Pole Gun

Complete sprayer includes: 1 in. (25.4 mm) x 25 ft (7.6 m) clear braid hose, 4 texture tips and Y adapter.

- **Delivery** — 1-1.5 gpm (3.8-5.7 lpm) typical
- **Working Pressure** (air and fluid) — 100 psi (7 bar, 0.7 MPa)
- **Pressure Pot** — Two 5 gal (18.9 l)
- **Dimensions** — 24 in. W x 23 in. L x 40 in. H
(610 mm W x 584 mm L x 1016 mm H)
- **Weight** — 94 lb (43 kg)
- **Instruction Manual** — 308-717

Compressorless design utilizes an external air supply for a cost effective means of application for some customers.

Taller wheels roll around the job site and up and down stairs.



Two five gallon tanks allow longer production time between fill-ups.

Shut off valves at each tank outlet allows filling of one tank while spraying with the other.

HELPFUL HINT FOR EXTERIOR FINISHES

Always test a new material before loading it into the TexSpray. First, thoroughly mix and agitate the material in accordance with the texture material manufacturer's recommendations. Allow the material to set-up for approximately ten minutes and then re-examine it. If it shows signs of settling out, it may separate once pumped. If the material is starting to cure, it may solidify in the system. Always know the material set-up time, especially with cement-based materials. If after the ten minute wait, the material looks unchanged, it should be a good candidate for any pumping and spraying application.



TEXSPRAY™ GM1030

The GM1030 easily sprays common gypsum-based wall and ceiling textures in addition to common exterior textures such as acrylic/elastomerics sold in pre-mixed form. Sprayable materials are smooth to heavily aggregated with silica sand, perlite, vermiculite and polystyrene in fine, medium, coarse and extra coarse grades.

"We currently use four TexSpray GM1030s to apply a medium grade exterior texture. The 1030's siphon feed design allowed us to pump directly from 55 gallon (208 liter) drums, guaranteeing color consistency and more uniform texture finishes. Since moving up to the very efficient GM1030, we now use 25% less material on most jobs while achieving better results. Who can argue? Production rates are up, material consumption is down. Graco really stands behind their products and parts and service are available locally."

Bob Gregor
Project Manager
Charlotte Paint Company
Mount Holly, NC

231-300 TexSpray GM1030

Complete sprayer includes: 50 ft (15.2 m) hose, heavy duty texture gun and three texture spray discs - 3/16 in. (4.7 mm), 1/4 in. (6.3 mm), and 3/8 in. (9.5 mm).

- **Delivery** — 3.0 gpm (11 lpm) max
- **Working Pressure** — 1000 psi (70 bar, 0.70 MPa) max
- **Hose** — 50 ft (15.2 m) of 3/8 in. hose
- **Fuel Tank Capacity** — 0.95 gal (3.6 l)
- **Engine Size** — 5.5 HP Honda
- **Dimensions** — 23 in. W x 30 in. L x 32 in. H (584 mm W x 762 mm L x 813 mm H)
- **Weight** — 150 lb (68 kg)
- **Instruction Manual** — 308-269

Pump from 5 to 55 gallon containers for the most consistent finishes. Suction tube set-up cleans up faster and more thoroughly than hopper designs.

Direct drive pump assembly efficiently pumps textures to 3 gpm (11 lpm) for outstanding performance from a lightweight package.

Quick knock-down pump inlet allows easy and fast fluid section service.

Exclusive, automatic pressure dump system ensures "soft start" on trigger pull to eliminate the material blast which affects the consistency of texture finishes. Also relieves system pressure during stall conditions to minimize material separation.

Run longer hose lengths (up to 200 ft, 61 m) for maximum coverage area.

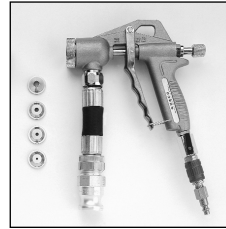
Full featured texture gun allows infinite application choices in both fan pattern width, design and texture patterns.



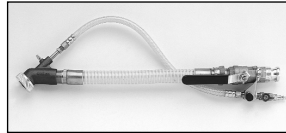
Accessories

TEXSPRAY HP Series

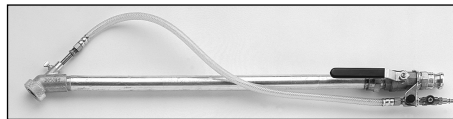
- 239-697 Clear Braided Hose Kit, 1 in. x 25 ft x 3/8 in. (25.4 mm x 7.6 m x 9.5 mm) Air Hose
- 239-698 Clear Braided Hose Kit, 1 1/4 in. x 25 ft x 3/8 in. (31.7 mm x 7.6 m x 9.5 mm) Air Hose*
- 239-699 Black Hose Kit, 1 in. x 25 ft (25.4 mm x 7.6 m) with quick disconnect, 25 ft. x 3/8 in. (7.6 m x 9.5 mm) Air Hose**
- 240-154 Clear Braided Hose Kit, 1 in. x 50 ft x 3/8 in. (25.4 mm x 15.2 m x 9.5 mm) Air Hose
- 240-155 Clear Braided Hose Kit, 1 1/4 in. x 50 ft x 3/8 in. (31.7 mm x 15.2 m x 9.5 mm) Air Hose
- 238-810 TexSpray Trigger Gun (Compact HP only)
- 238-177 TexSpray Trigger Gun (EXT only, includes fine finish tip)
- 237-855 FineFinish Kit (Trigger Gun only)
- 238-807 Pole Gun (3 ft, 1 m)
- 238-080 Flexhead Gun
- 190-952 Garden Flush Kit
- 238-043 Sponge Ball Clean Out Kit
- 239-031 Additional Pressure Tank Kit for EXT HP



238-810



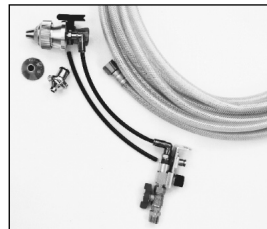
238-080



238-807



190-952



237-477

* Clear Braided Hose Kit, 1 1/4 in. x 25 ft (31.7 mm x 7.6 m), 2.5% less psi drop than the 1 in. (25.4 mm) hose for more flow at the same pressure, less tank psi required, longer hose length capability and less initial surge.

** Black Hose Kit, 1 in. x 25 ft (25.4 mm x 7.6 m) with quick disconnect for use in extreme job site conditions and designed to resist abrasion from exposed rebar, metal edges, brick face, sharp corners, etc.

TexSpray Mark V

- 237-477 Atomizer Kit*
- 237-476 Mark V Gun

* Air/Airless Texture Atomizer Kit includes 50 ft (15.2 m) air hose, 2 air caps, HD RAC Tip, Tip Adapter and Air Adjustment Bracket. This kit allows the application of high quality fine to coarse textures. Gun maintains a very light airless feel. A 3 HP compressor (minimum) is required.

TexSpray GM1030

- 224-982 Hose Kit, 3/4 in. x 25 ft (18.9 mm x 7.6 m) (no fittings required)
- 235-577 Hose Kit, 3/4 in. x 50 ft (18.9 mm x 15.2 m) (no fittings required)
- 224-524 GM 3012 Airless Quick Change Kit*
- 235-490 TexSpray Air Spray Gun
- 235-579 3/16 in. (4.7 mm) Texture Spray Disc
- 235-580 1/4 in. (6.3 mm) Texture Spray Disc
- 235-581 3/8 in. (9.5 mm) Texture Spray Disc

*Provides airless spraying capability up to 1.25 gpm (4.7 lpm) at 3000 psi (210 bar). Includes pump, controls and filter. Order gun, hose and tips separately.

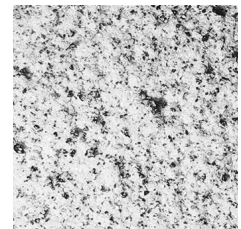
COMMONLY SPRAYED TEXTURES



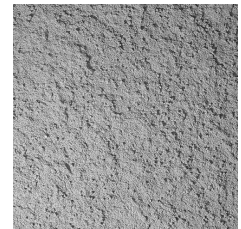
gypsum



elastomeric



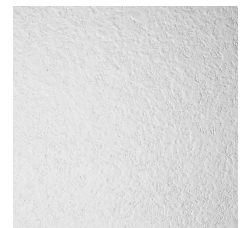
stone paint



EIFS



cement stucco



deck coatings

