



First choice when  
quality counts.™

# Husky™ 3275

## Air-Operated Double Diaphragm Pump

- Bolted leak-free flanged connections - no clamp bands used!
- Large flow paths that can handle high viscosities
- Easy air valve maintenance
- Heavy-duty construction
- Fluid flow up to 275 gpm (1040 lpm)

**The most  
reliable and  
easy-to-service  
3 in. (76 mm)  
pump on the  
market today!**



COMPONENTS

The Husky 3275 is the biggest pump in Graco's double diaphragm lineup. Its larger size enables it to deliver over 275 gallons (1041 liters) per minute.

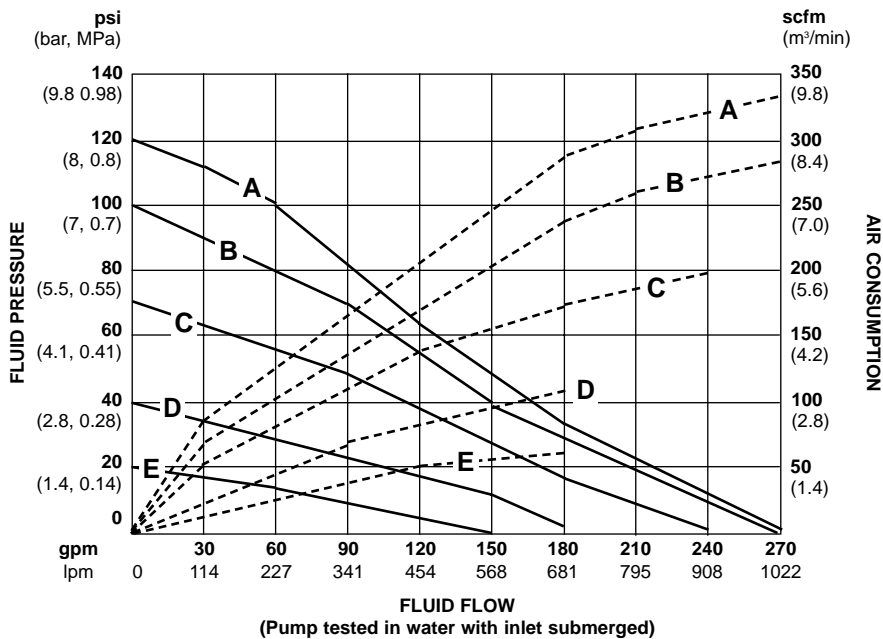
The lube-free Husky 3275 pump was engineered with the chemical, petrochemical, paper and mining industries in mind. It boasts the most reliable and trouble-free air switching valve in the world. The innovative design of the air switching valve prevents shut-down and air valve hang-up problems and can be serviced without disassembling the pump.

The pump's heavy-duty construction make it ideal for handling the most difficult chemical transfer, filter press feed, and dewatering applications.

# Technical Specifications

- Maximum fluid working pressure . . . . . 120 psi (0.84 MPa, 8.4 bar)
- Air operating range . . . . . 20-120 psi (0.14-0.84 MPa, 1.4-8.4 bar)
- Maximum air consumption . . . . . 325 scfm
- Air consumption
  - at 70 psi (480 kPa, 4.7 bar) / 100 gpm (379 lpm) . . . . . 120 scfm (1.26 m<sup>3</sup>/min)
- Maximum free flow delivery . . . . . 275 gpm (1,041 lpm)
- Maximum pump speed . . . . . 135 cpm
- Gallons (liters) per cycle . . . . . 2.0 (7.6)
- Maximum suction lift (water)
  - Dry . . . . . 8 ft. (2.4 m)
  - Wet . . . . . 25 ft. (7.6 m)
- Maximum size pumpable solids . . . . . 3/8 in. (9.4 mm)
- Air inlet . . . . . 3/4 npt(f)
- Maximum operating temperature . . . . . 150°F (65°C)
- Fluid inlet . . . . . 3 in. ANSI 4 bolt flange / DIN 8-bolt flange
- Fluid outlet . . . . . 3 in. ANSI 4 bolt flange / DIN 8-bolt flange
- Wetted parts
  - Alumimum . . . . . aluminum, Teflon, Santoprene, Hytrel, plated steel, acetal, SST
- Weight
  - Alumimum . . . . . 150 lbs. (68 kg)
- Instruction manual
  - Alumimum . . . . . 308-639

## Performance Chart – Husky 3275



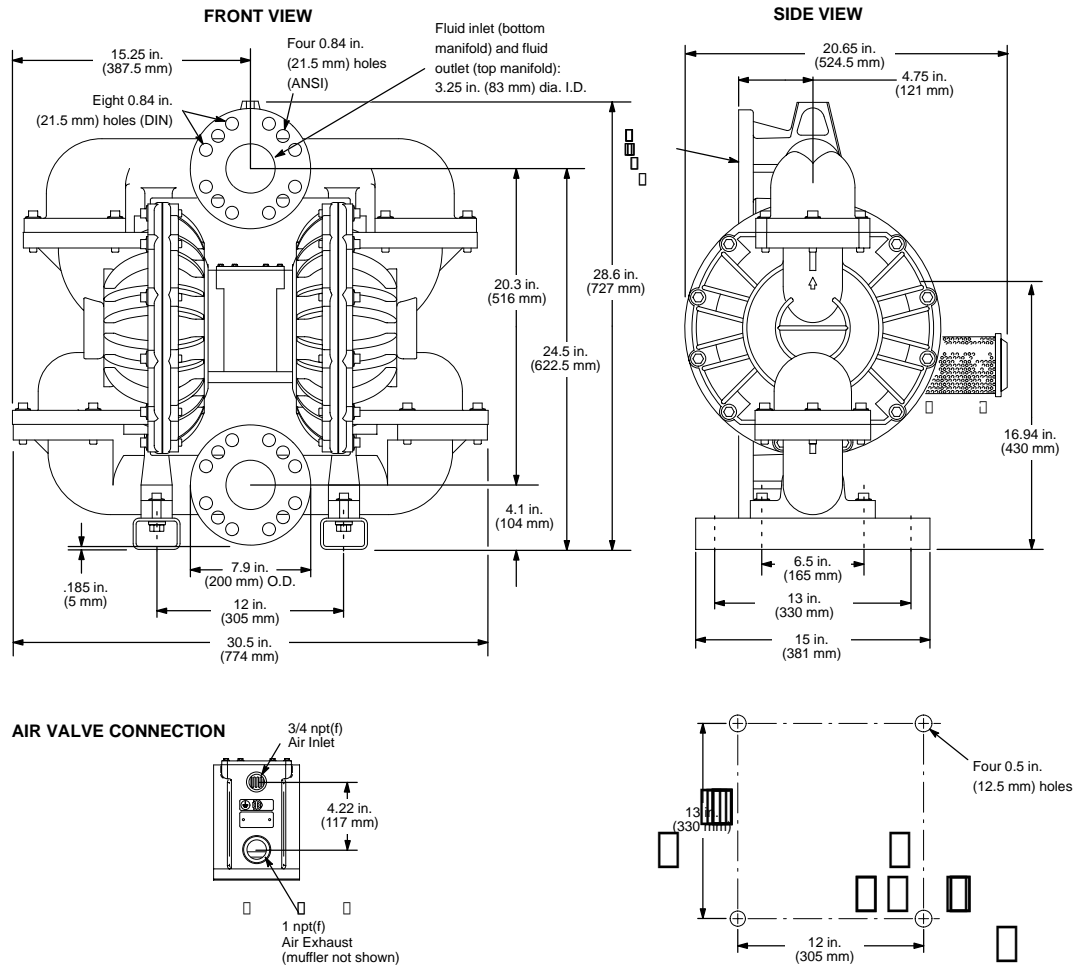
### Key to Varying Air Pressures

- A** at 120 psi (8 bar, 0.8 MPa)
- B** at 100 psi (7 bar, 0.7 MPa)
- C** at 70 psi (4.8 bar, 0.48 MPa)
- D** at 40 psi (2.8 bar, 0.28 MPa)
- E** at 20 psi (1.4 bar, 0.14 MPa)

## Accessories

- 110-197 Quick-Connect (3/4) Air Supply Nipple**  
Max. working pressure: 300 psi (2.1 MPa, 21 bar).  
Inlet/outlet: 3/4 npt(f). Steel.
- 110-200 Quick-Connect (3/4) Air Supply Coupler**  
Max. working pressure: 300 psi (2.1 MPa, 21 bar).  
Inlet/outlet: 3/4 npt(f). Brass.
- 107-141 Air Shut-Off Valve Bleed**  
Inlet/outlet: 3/4 npt(mxf). Bronze.
- 224-040 Air Guard Runaway Valve**  
Max. working pressure: 120 psi (0.83 MPa, 8.3 bar).  
Max. cfm @ 100 psi (0.7 MPa, 7 bar): 250 scfm.  
Inlet/outlet: 3/4 npt(f). Aluminum alloy.
- 238-881 Integrated FR Assembly**  
Max. working pressure: 120 psi (0.83 MPa, 8.3 bar).  
Inlet/outlet: 3/4 npt(f). Zinc.
- 222-011 Grounding Wire and Clamp**  
Length: 25 ft. (7.6 m). 12 ga. (1.5 mm<sup>2</sup>).
- 180-187 High Volume Air Regulator**  
Max. working pressure: 300 psi (2.1 MPa, 21 bar).  
Max. cfm @ 100 psi (0.7 MPa, 7 bar): 380 scfm.  
Quick-disconnect: 1/4 in. gauge ports.  
Inlet/outlet: 3/4 npt(f).
- 106-150 Air Filter**  
Max. working pressure: 250 psi (1.72 MPa, 17.2 bar).  
Max. cfm @ 100 psi (0.7 MPa, 7 bar): 260 scfm.  
Inlet/outlet: 3/4 npt(fbe). Zinc plated.
- Adapter Flange Kits**  
Inlet/outlet: ANSI to npt.  
**239-392** Stainless steel  
**239-391** Carbon steel
- 207-675 Air Manifold 90°**  
Inlet/outlet: 3/4 npt(f) x 3/4 npt(m).  
Quick-disconnect: 1/4 npt(f) and 1/8 npt(f) port.  
Carbon steel.
- 238-765 Air Valve Repair Kit**

## Dimension Drawings - Heavy-Duty Series



## Ordering Information for the Husky 3275

To determine the model number of your pump from the following matrix, select the six digits which describe your pump-of-choice, working from left to right. The first digit is always "D," designating Husky diaphragm pumps. The remaining five digits define the materials of construction. Example: a pump with an aluminum air motor and fluid section, stainless steel seats, stainless steel balls, and Santoprene diaphragms is Model DK3-366.

| Diaphragm Pump | Air Motor | Fluid Section | Select One from Each Column |                |                |
|----------------|-----------|---------------|-----------------------------|----------------|----------------|
|                |           |               | Seats                       | Balls          | Diaphragms     |
| D              | K         | 3 (Aluminum)  | 3 (316 SST)                 | 1 (Teflon)     | 1 (Teflon)*    |
|                |           |               | 5 (Hytrel)                  | 2 (Acetal)     | 5 (Hytrel)     |
|                |           |               | 6 (Santoprene)              | 6 (Santoprene) | 6 (Santoprene) |

*Teflon® and Hytrel® are registered trademarks of Du Pont.  
Santoprene® is a registered trademark of Monsanto.*

### Conversion/Repair Kits

Conversion/Repair Kits may be ordered separately. To repair the seats, balls and diaphragms, select the six digits which describe your pump from the following matrix, working from left to right. The first three digits are always D0K. The remaining three digits define the materials of construction. A choice of zero allows you to omit that component. Example: To order Teflon diaphragms only for a metal 3275 pump order D0K-001.

| Diaphragm Pump | Kit | Kit | Select One from Each Column |                |                |
|----------------|-----|-----|-----------------------------|----------------|----------------|
|                |     |     | Seats                       | Balls          | Diaphragms     |
| D              | 0   | K   | 0 (None)                    | 0 (None)       | 0 (None)       |
|                |     |     | 3 (316 SST)                 | 1 (Teflon)     | 1 (Teflon)*    |
|                |     |     | 5 (Hytrel)                  | 2 (Acetal)     | 5 (Hytrel)     |
|                |     |     | 6 (Santoprene)              | 6 (Santoprene) | 6 (Santoprene) |